

SG-ZCM2035N(-O)

- 2Megapixel 35x Zoom Starlight Network Camera Module



1. Features

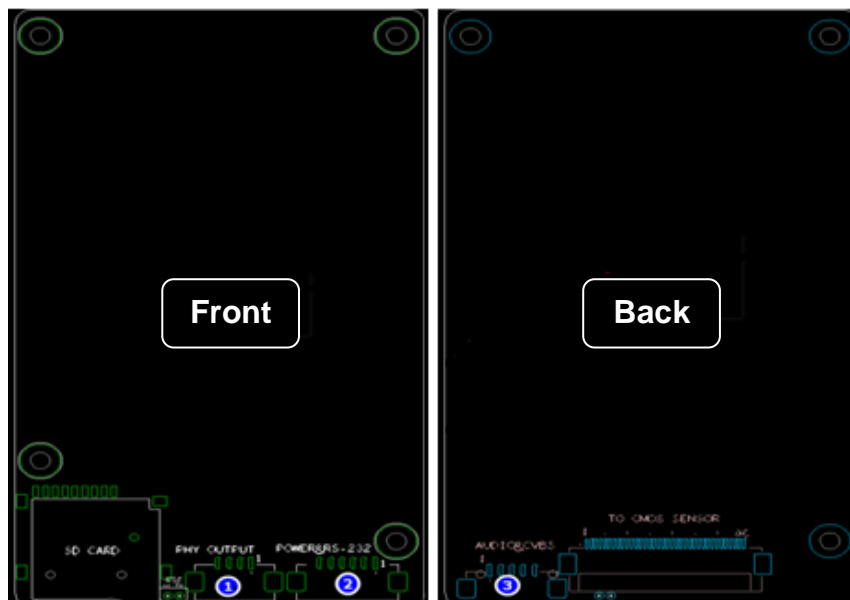
- > 1/2" Sony Exmor CMOS Sensor.
- > Powerful 35x optical zoom (6~210mm).
- > Max. 2Mp(1920x1080) Resolution
- > Support various IVS functions
- > Support Electronic Defog and Optical Defog(Optional)

2. Specification

Model		SG-ZCM2035N(-O)
Sensor	Image Sensor	1/2" Sony Exmor CMOS
	Effective Pixels	Approx. 2.13 Megapixel
	Max. Resolution	1945(H)x1225(V)
Lens	Focal Length	6mm~210mm, 35x Optical Zoom
	Aperture	F1.5~F4.8
	Close Focus Distance	0.1m~1.5m (Wide~Tale)
	Angle of View	61°~2.0°
Video Network	Compression	H.265/H.264/H.264H/MJPEG
	Storage Capabilities	TF card, up to 128G
	Network Protocol	Onvif, GB28181, HTTP, RTSP, RTP, TCP, UDP
	Smart Alarm	Motion Detection, Cover Alarm, Storage Full Alarm
Resolution		50Hz: 25fps@2Mp(1920x1080) 60Hz: 30fps@2Mp(1920x1080)
IVS		Tripwire, Cross Fence Detection, Intrusion, Abandoned Object, Fast-Moving, Parking Detection, Crowd Gathering Estimation, Missing Object, Loitering Detection.
S/N Ratio		≥55dB (AGC Off, Weight ON)

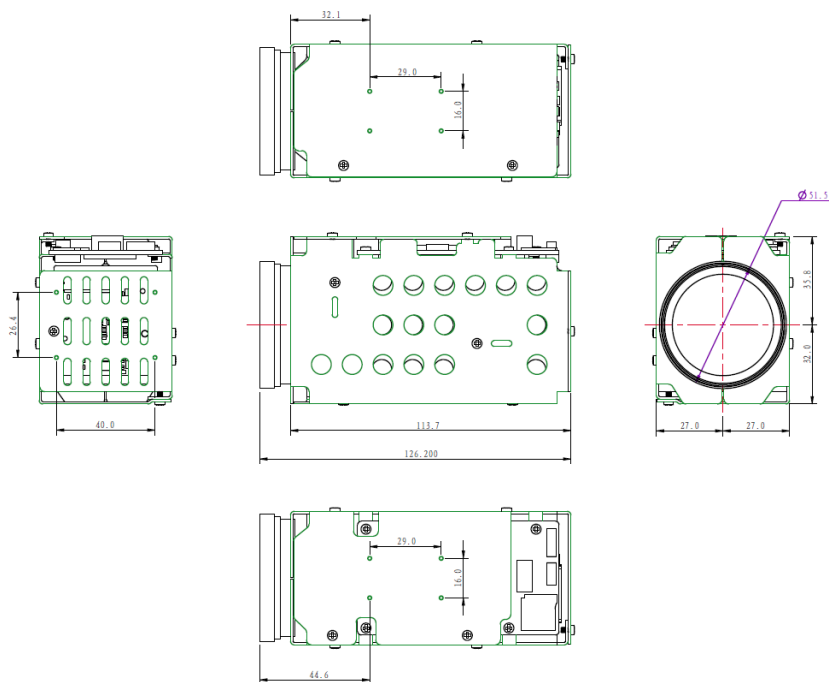
Minimum Illumination	Color: 0.001Lux/F1.5; B/W: 0.0001Lux/F1.5
EIS	Electronic Image Stabilization (ON/OFF)
Exposure Compensation	ON/OFF
Strong Light Suppression	ON/OFF
Day/Night	Auto/Manual
Electronic Defog	ON/OFF
Optical Defog(Optional)	Night Mode, 750nm~1100nm channel is Optical Defog
Zoom Speed	Approx 4.5s(Optical Wide-Tele)
White Balance	Auto/Manual/ATW/Indoor/Outdoor/ Outdoor Auto/ Sodium lamp Auto / Sodium lamp
Electronic Shutter Speed	Auto Shutter (1/3s~1/30000s)Manual Shutter (1/3s~1/30000s)
Exposure	Auto/Manual
2D Noise Reduction	Support
3D Noise Reduction	Support
Flip	Support
External Control	TLL
Communication Interface	Compatible with the SONY VISCA Protocol
Focus Mode	Auto/Manual/Semi-automatic
Digital Zoom	4x
Operating Conditions	(-30°C~+60°C/20% to 80%RH)
Storage Conditions	(-40°C~+70°C/20% to 95%RH)
Power Supply	DC 12V±15% (Recommend: 12V)
Power Consumption	Static power: 4.5W, Sports power: 5.5W
Dimensions(L*W*H)	Approx. 126mm*54mm*68mm
Weight	Approx. 410

3. Interface Definition:



Type	PIN Number	PIN Name	Description
(1) 4PIN Internet Interface	1	ETHRX-	Internet RX-
	2	ETHRX+	Internet RX+
	3	ETHTX-	Internet TX-
	4	ETHTX+	Internet TX+
(2) 6PIN Power & UART Interface	1	DC_IN	DC12V±10%
	2	GND	GND
	3	RXD1	TTL 3.3V, Pelco Protocol
	4	TXD1	TTL 3.3V, Pelco Protocol
	5	RXD0	TTL 3.3V, Visca Protocol
	6	TXD0	TTL 3.3V, Visca Protocol
(3) Audio & Video Interface	1	AUDIO_OUT	Audio Out(Line Out)
	2	GND	GND
	3	AUDIO_IN	Audio In(Line In)
	4	GND	GND
	5	VIDEO_OUT	Video Out(CVBS)

4. Dimension



Hangzhou Savgood Technology Co., Ltd.

Rm. 701, Xincheng Fazhan Building #1, No. 406 Xintiandi Street,
 Xiacheng District, Hangzhou City, 310004, China
 Tel: +86 - (571) 8803 8121
 Email: sales@savgood.com
 http://www.savgood.com

*Design and specifications are subject to change without prior notification.
 © 2013 Savgood Technology Co., Ltd.